

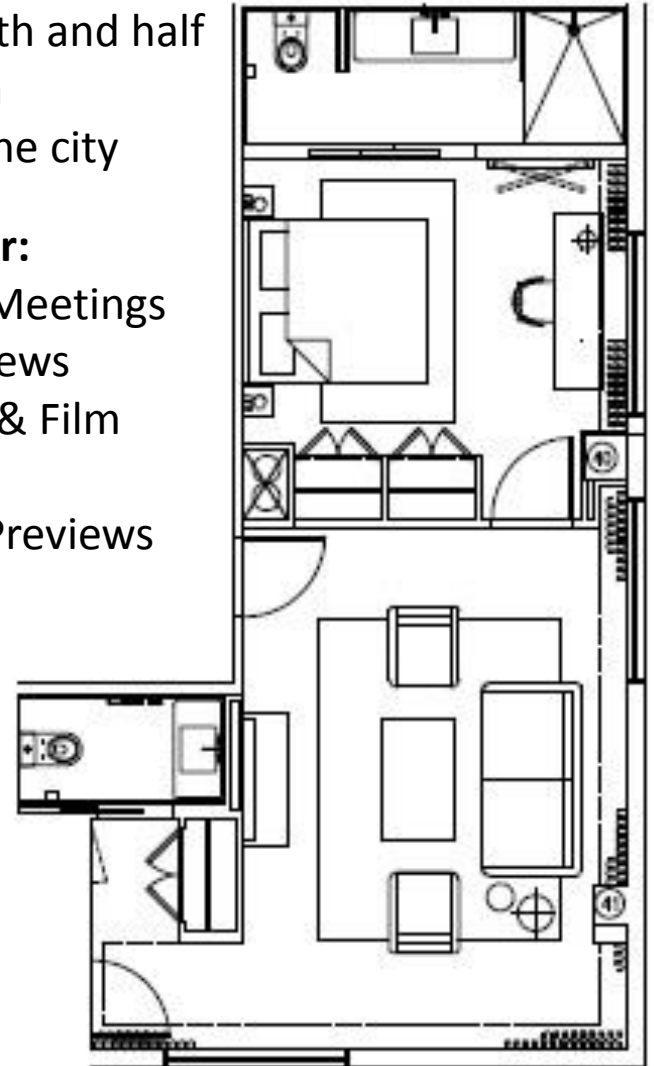


## HOWARD SUITE

- 700 Square Feet
- Separate living room & bedroom area
- Master bath and half guest bath
- Views of the city

### Perfect for:

- Small Meetings
- Interviews
- Photo & Film Shoots
- Press Previews



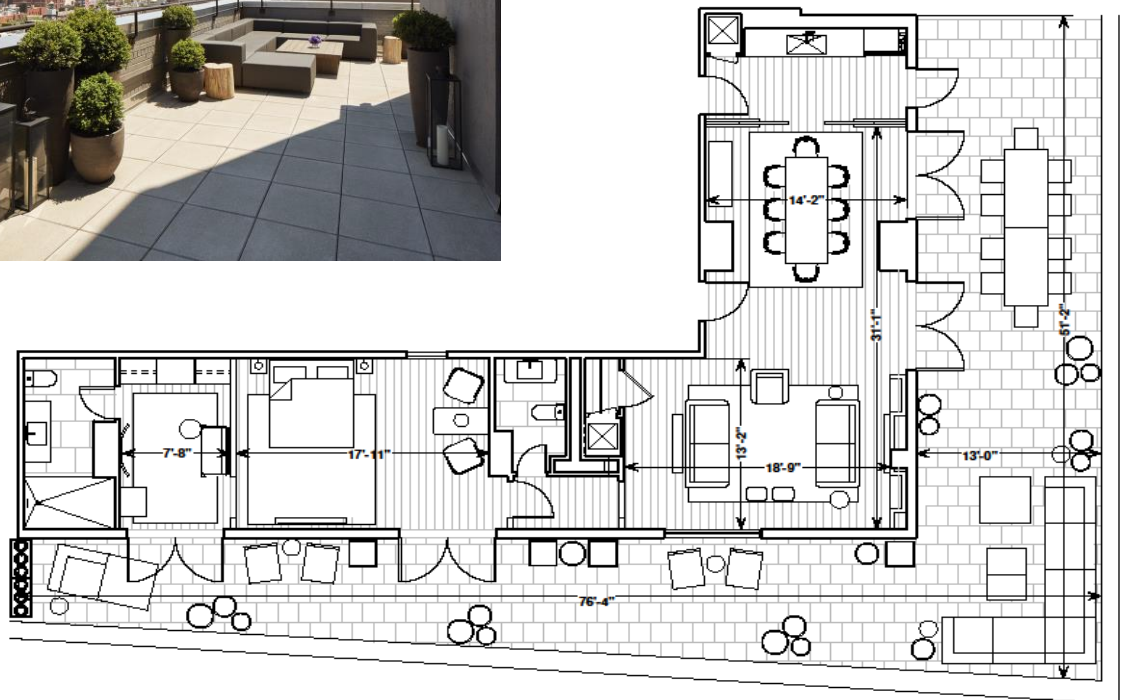


# TERRACE SUITE

- 3,000 Square Feet
- Living room and dining room with kitchenette
- Separate bedroom area with luxury dressing room
- Master bath and half guest bath

## Perfect for:

- Small Cocktail Parties
- Photo & Film shoots
- Press Previews
- Meetings
- Interviews



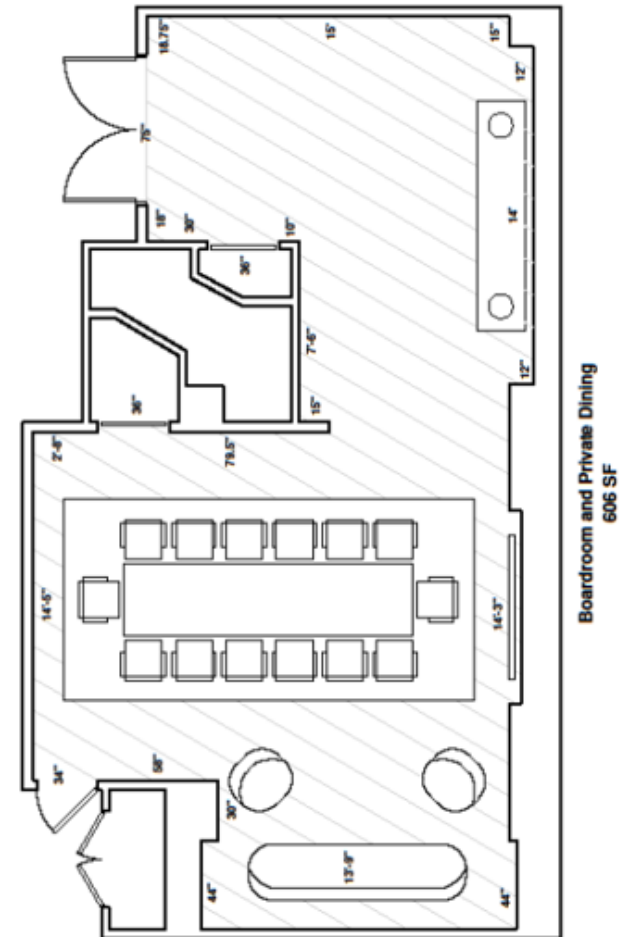




## CREATIVE STUDIO

### *11 Howard's Meeting room*

- 600 square feet
- 12-15 people
- Conference style layout
- Adjoining pre-function area



Boardroom and Private Dining  
606 SF



## THE BLOND

### *11 Howard's Bar and Lounge*

- 3,000 Square Feet
- Max capacity 200 people

Perfect for:

- Private Events
  - Cocktail Parties
  - After Parties for Premieres
  - Holiday Parties
- Photo & Film Shoots
- Informal Meetings

